



ACCOMMODATION^{UNLTD}



13 Rope Walk
Wapping Wharf, Bristol, BS1 6ZF

Asking Price £475,000



13 Rope Walk

Wapping Wharf, Bristol, BS1 6ZF

We are delighted to offer this brand new (March 2021) 2 bed apartment with stunning water views. This apartment really needs to be viewed to be truly appreciated. The apartment has two double bedrooms, one of which has an en-suite shower room. The open plan kitchen living room has a modern fitted kitchen with all white goods and a good sized balcony overlooking the waterfront. The views from the balcony are fantastic. There is a second bathroom. The property also has an allocated parking space. If you are looking for that "something special" then this is surely a property for you.

Living Room/Kitchen
4.95 x 4.34

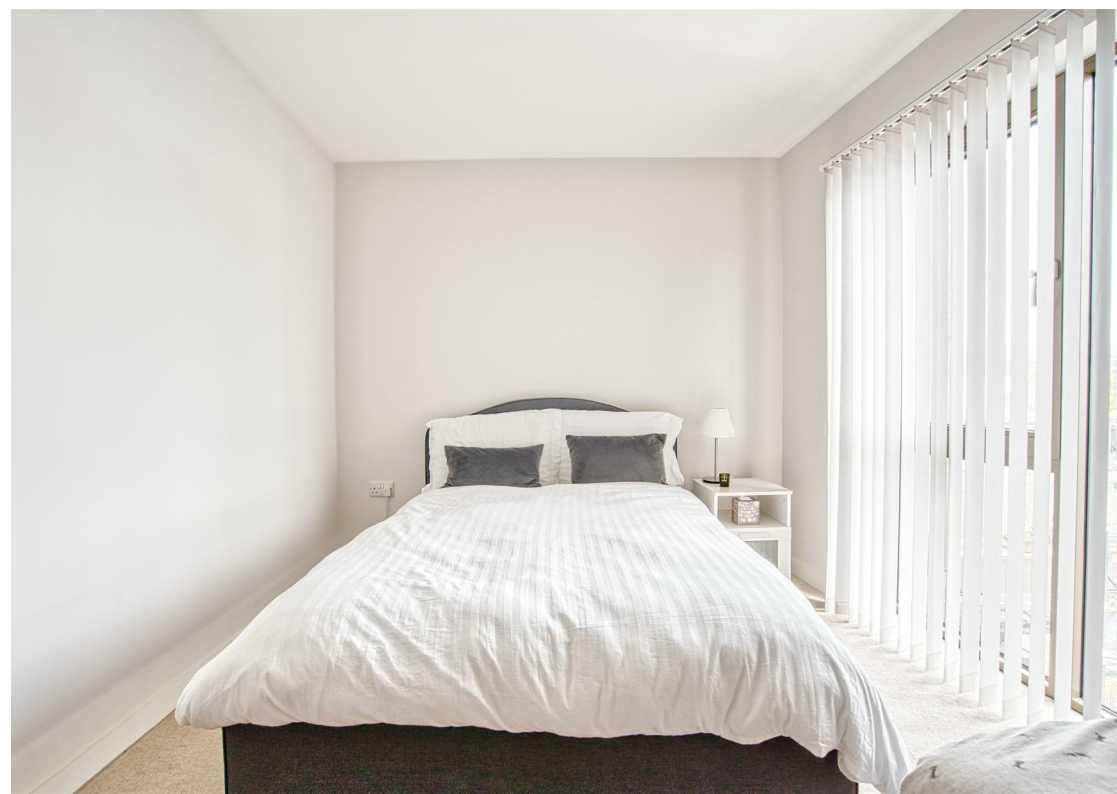
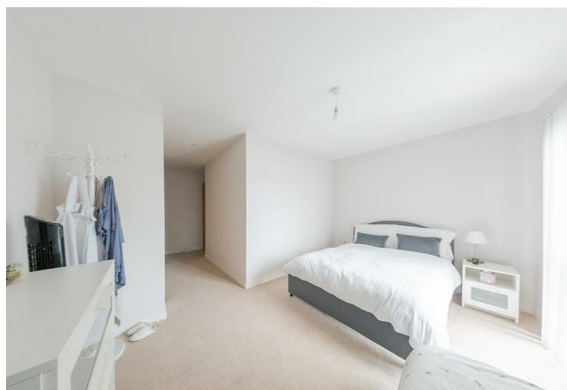
Master Bedroom
13'11" x 9'4" (4.25 x 2.85)

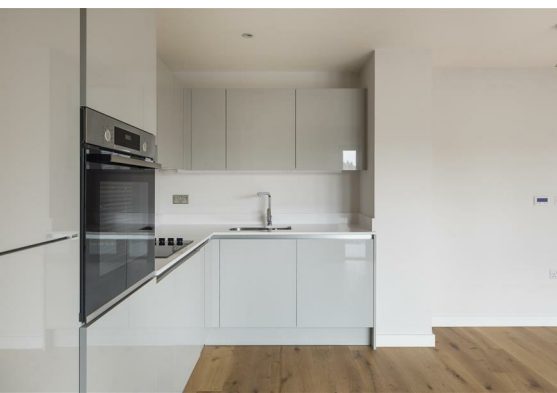
Bedroom 2
12'8" x 10'0" (3.88 x 3.07)

Family Bathroom

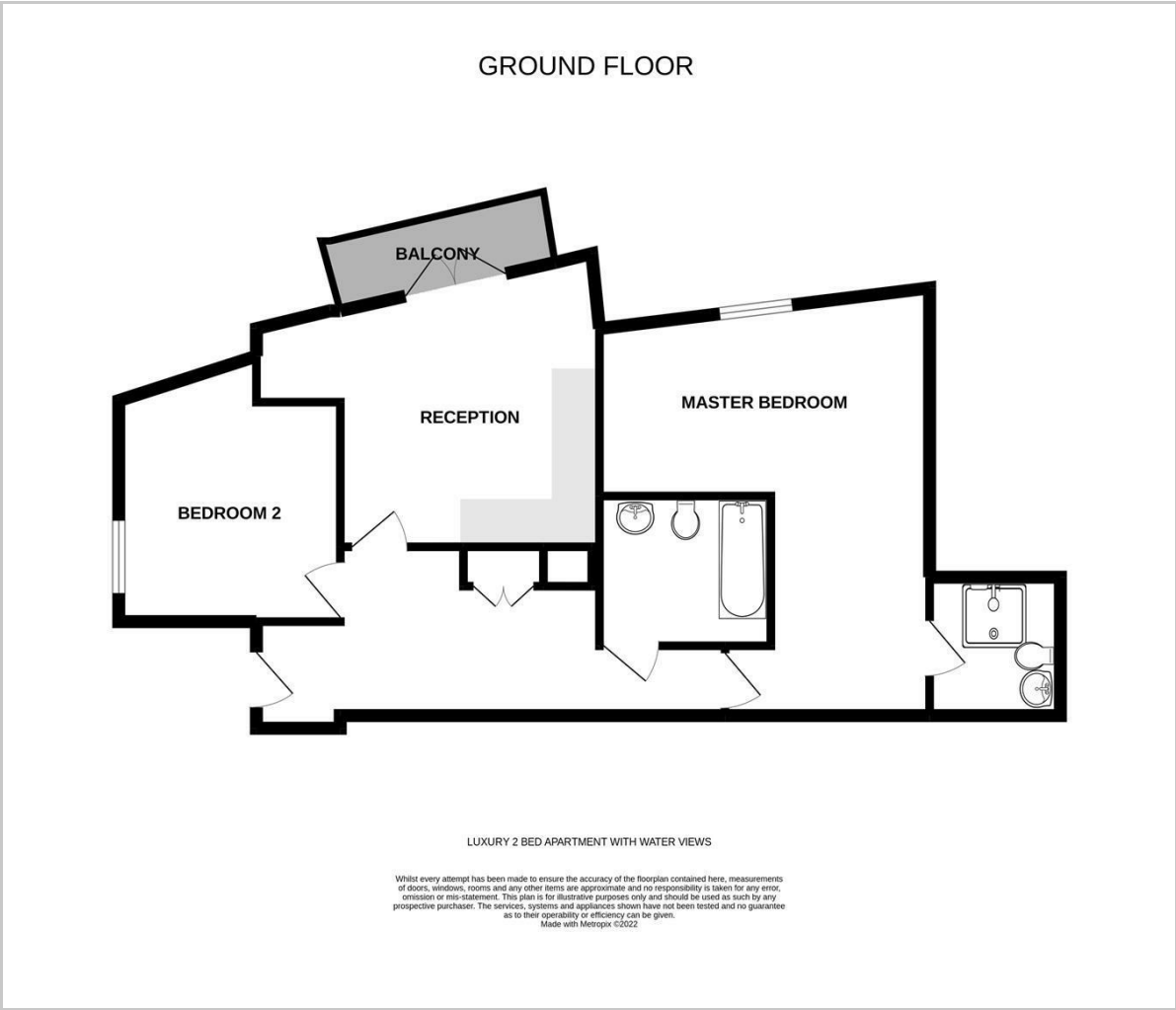
Balcony

General





Floor Plan

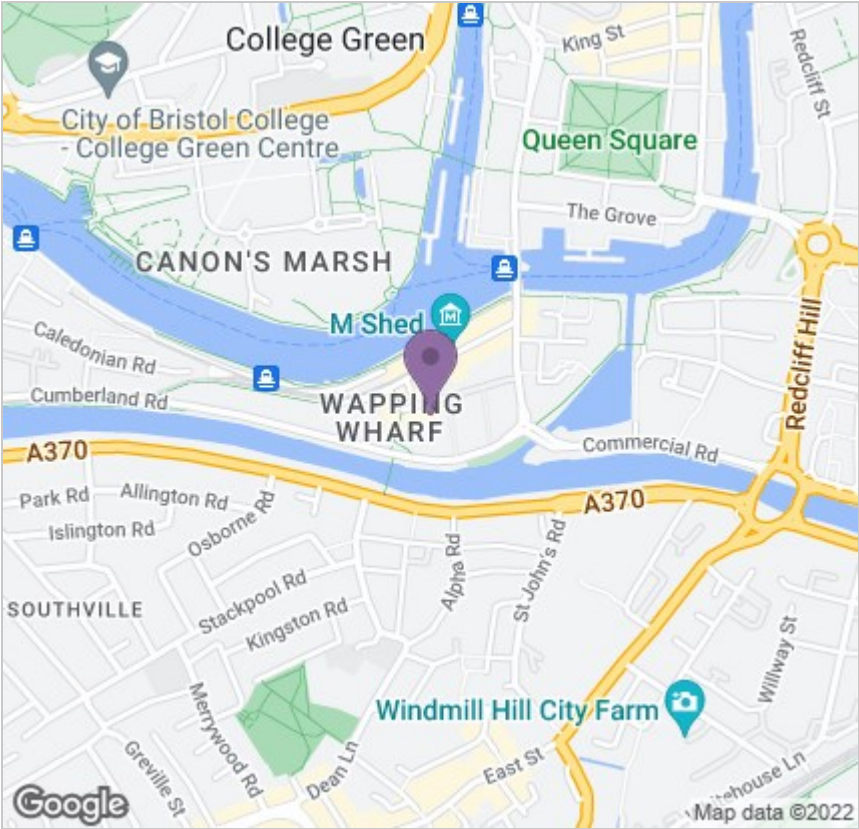


Viewing

Please contact us on 0117 973 9394 if you wish to arrange a viewing appointment for this property or require further information.

These particulars, whilst believed to be accurate are set out as a general outline only for guidance and do not constitute any part of an offer or contract. Intending purchasers should not rely on them as statements of representation of fact, but must satisfy themselves by inspection or otherwise as to their accuracy. No person in this firms employment has the authority to make or give any representation or warranty in respect of the property.

Area Map



Energy Efficiency Graph

